

Zaval Database Export Utility

Version 1.0

User's Guide

Zaval Creative Engineering Group
<http://www.zaval.org>

Contents

Introduction to the Zaval DB Export Utility	3
What Can You Do with Zaval DB Export Utility	3
Database Administration: Best Practices	3
Installing the Zaval Database Export Utility	3
Connecting to the database	4
Operating the SQL Console	4
Disconnecting from the database	5
What you receive using the tool	5
Customizing the product	6
Further product plans	6
Support available	6

Introduction to the Zaval DB Export Utility

The Zaval Database Export Utility is a light-weight, web-based client, best used by advanced software engineers and database administrators for data export from any database without having to launch the database-specific administrative clients or tools.

The Zaval Database Export Utility has the same appearance and similar functionality as our well-known Zaval Database Front-end solution.

What Can You Do with Zaval DB Export Utility

The Zaval Database Export Utility handles only one task – data export, but does it really good. You can get data from selected or all fields of any table in a form of insert queries. So, they can be easily imported to any database. To make your life even easier our tool provides a possibility to generate drop/create routing for selected tables (actually, create operation is usually database-specific, so our tool generate something like a template of create queries).

Just like Zaval Database Front-end this tool can be used to access database remotely via HTTP or HTTPS protocols. Since this tool is a Web-based client, developers and administrators may connect to the database via the SSL configured for all major Web servers with JSP 1.2 compliant engine installed (Resin, Tomcat, WebSphere, WebLogic).

Database Administration: Best Practices

In a combination with Zaval Database Front-end this tool allows database administrators handle almost all range of tasks to maintain database remotely.

- Remote database administration – you have a database that can't be updated/exported remotely (probably, for some security reasons - this is a common situation for many hosting providers), but you need to do it fast and have a JSP engine up and running over there. The Zaval Database Front-end and Zaval Database Export Utility are running on the same host as a database – they are just local applications and there are no limitations for them. Data that is exported with DB Export Utility can be easily imported to another database with DB Front-end solution. For better security you can use them over HTTPS.

Installing the Zaval Database Export Utility

To install the Zaval Database Export Utility on your JSP1.2 compliant Web Server, you need to upload the files from the JSP bundle to any configured Web application. We suggest that you create a separate Web application for this tool. When the files upload is complete, the Zaval Database Export Utility is ready to use.

In your Web applications classpath settings, you should indicate the paths to libraries of the JDBC drivers that will be available for this application. At present the tool does not perform the search for available JDBC drivers automatically. Therefore, you should check that the database drivers that you plan to query are available in the classpath.

Queries that are expected should be in the following format:

```
...
table1: field1, field2, field3;
table2: field4, field5, field6;
table3: *;
table4;
...
```

Command above will produce insert queries for custom fields for **table1** and **table2** and for all fields in **table3** and **table4**.

There are following features available:

- pageEncoding – this drop-box allows you to set encoding for the html-page you see. This feature is very useful when you are operating with non-English and/or UTF-8 data
- dbEncoding – this is the database internal data representation. For example, when creating database in DB2, you can set to store all your data in UTF/cp1252 or any other encoding different from ISO-8859-1
- outEncoding – this is internal java data representation. Usually you do not need to change this parameter.
- Show on page – allows either show all queries on page or get them as a file.
- Save input – this checkbox allows you to save previously executed query in form (very useful).
- Show DBMS info – shows you all available database info.
- Generate drop queries – allows to generate queries like `'drop table tableName'`.
- Generate create queries – allows to generate create queries templates (because create queries usually database-specific) like `'create table tableName (name VARCHAR, ...)'`, so you need to change them a bit.

Disconnecting from the database

In order to disconnect from the database, you need to check the disconnect checkbox (see **Screenshot 2**) and submit a form. If a query is not empty, it will be executed with results will be displayed (depends on **Show on page** option) and database connection will be dropped. Submitting an empty query simply disconnects you from the database.

What you receive using the tool

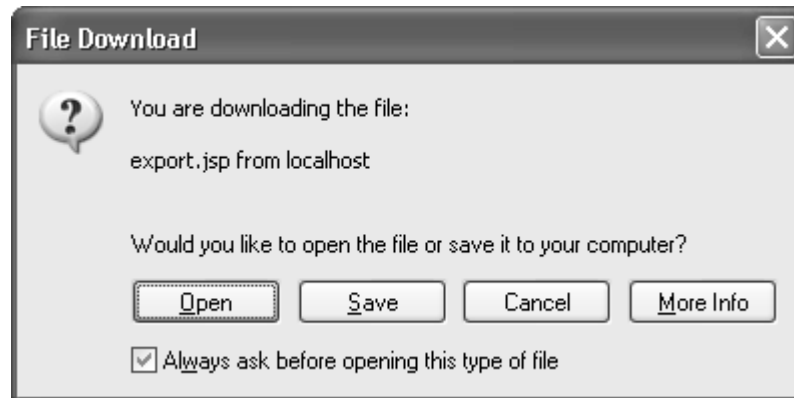
Sample query result set with Show on page enabled is given on the **Screenshot 3**:

```
create table projects (projectID BIGINT, projectCaption VARCHAR);
insert into projects (projectID, projectCaption) values ('1', 'db-front-end');
insert into projects (projectID, projectCaption) values ('2', 'db-back-end');
```

```
insert into projects (projectID, projectCaption) values ('3', 'db-export');
```

Screenshot 3. Sample query results

On **Screenshot 4** you see situation when you disable Show on page option:



Screenshot 4. Sample query results as a file

If you choose 'Save' you'll be prompted to save a file named 'db.sql' with a queries like those on **Screenshot 3** inside.

Customizing the product

There are several features that can be customized:

- pageEncodings list
- dbEncodings list
- outEncodings list
- queryDelimiter symbol
- subqueryDelimiter symbol
- file (file name – now it's a single jsp-file)

We tried to make all options self-explanatory, so there are no comments on them here. All these variables are stored as String arrays/char symbol/String respectively at the top of the jsp-file. The source code of the tool is well-commented to make desired changes easy.

Further product plans

Current tool implementation follows the minimalist computing concept. In near future the following features will be added:

- CVS (comma separated values) format support;
- Export by SQL select queries support;

Other plans are just the same like in Zaval DB Front-end product.

Support available

All support for software installation and problems should be sent directly to support@zaval.org with "Re: Zaval Database Export Utility Support" in subject line and

plain text in the message body, describing your request and/or your problem. Since this software is distributed under the General Public License and is maintained by its authors on non-commercial basis, your request will be answered as soon as possible, but no later than 5 business days.

The Zaval Creative Engineering Group carries out its software customization/new software development on the regular basis. For more info contact us at info@zaval.org.